

Waterfall pad for 3 Ft. Modular should be 7 feet wide, 30" front to back.



Base piece weighs 150 - 200 lbs. Use thick mortar bed.



Fill concrete column w/ concrete.



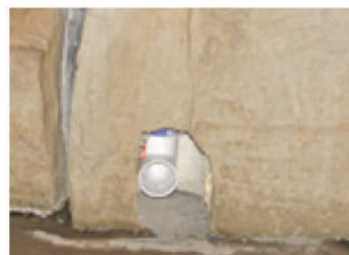
Set side boulders & mortar gap with base piece.



Set basin on 3/4" mortar bed. Level from left to right. Match up plumbing & concrete holes.



Drop plumbing sleeve in hole. Tighten threaded plug if you plan to pressure test line.



Connect plumbing at back of base piece. Hide pipe with long hollow piece (cut to fit).



Mortar cap rocks. Clean excess mortar & rake joints about 1/2 inch.